

State of Wyoming Corner Record

(In compliance with the CORNER PERPETUATION AND FILING ACT, Wyoming Statutes, 1977, Section 36-11-101, et. seq., and the Rules and Regulations of the Board of Registration for Professional Engineers and Professional Land Surveyors)

Reverse side of this form may be used if more space is needed.

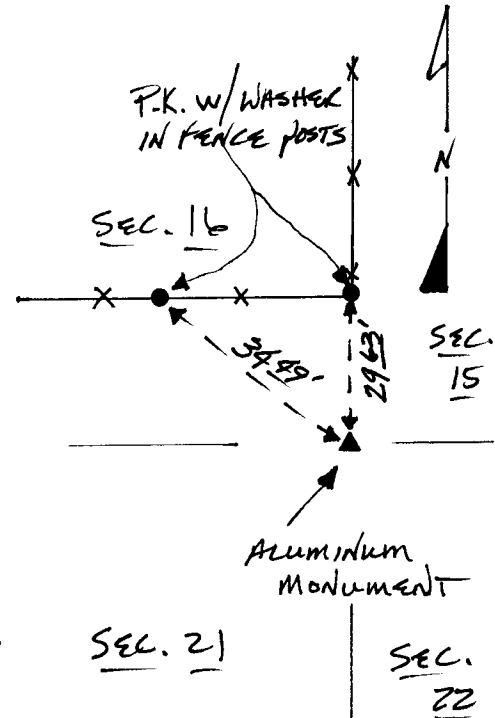
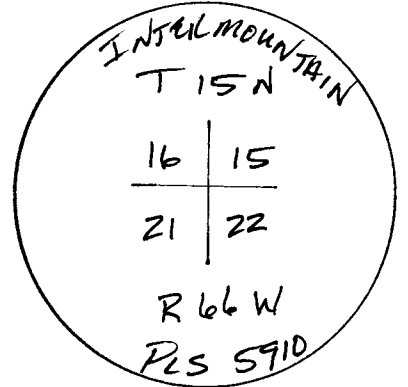
Record of original survey and citation of source of historical information (if corner is lost or obliterated). Description of corner monumentation evidence found and/or monument and accessories established to perpetuate the location of this corner. Sketch of relative location of monument, accessories, and reference points with course and distance to adjacent corner(s) (if determined in this survey). Method and rationale for reestablishment of lost or obliterated corner.

- FOUND GRANITE STONE 18" x 7" x 8"
W/ 3 CHISEL MARKS ON 2 SIDES
AND REBAR DRIVEN ALONG SIDE.

- REPLACED W/ 3/4 ALUMINUM CAP
ON 3/4" ALUMINUM PIPE STAMPED
AS SHOWN. STONE BURRIEN
ALONG SIDE.

- 2 REFERENCE POINTS SET AS
SHOWN IN SKETCH (PLS 5910)

- GLO RECORD: GRANITE 20" x 8" x 6" SEC. 21



Date of Field Work: 3/94 Office Reference: 2712

RECEIVED
 LARAMIE COUNTY
 CHEYENNE, WY.
 APR 18 PM 4
 140532

CROSS INDEX DIAGRAM

	1	2	3	4	5	6	7	8	9	10	11	12	13	14	15	16	17	18	19	20	21	22	23	24	25
A																									
B																									
C		6		5		4		3		2		1													
D																									
E																									
F																									
G		7		8		9		10		11		12													
H																									
J																									
K																									
L		13		17		16		15		14		13													
M																									
N																									
O																									
P		19		20		21		22		23		24													
Q																									
R																									
S																									
T		30		29		28		27		26		25													
U																									
V																									
W																									
X		31		32		33		34		35		36													
Y																									
Z																									

Firm/Agency, Address
 INTERMOUNTAIN PROFESSIONAL SERVICES, INC.
 5801 OSAGE AVENUE
 CHEYENNE WY 82001
 Telephone Number: (307) 632-3138

This corner record was prepared by me or under my direction and supervision.
 SEAL & SIGNATURE



Corner Name: SECTION CORNER Section: 15, 16 T 15 R 66; 6TH P.M. Cross-Index No.: N-13

21, 22